



ScotWeave **Velvet Dobby Designer** provides a unique CAD/CAM package for face-to-face velvet fabric design for dobby weaving. This includes single beam dobby fabrics and multi-beam, multi-tension dobby. With full colour printouts, and loomcard printouts (specifications). ScotWeave **Velvet Jacquard Designer** offers CAD-CAM for face-to-face velvet jacquard weaving. From artwork design, through weave selection and colouring, to production on electronic jacquard looms.

### Yarns & Patterns

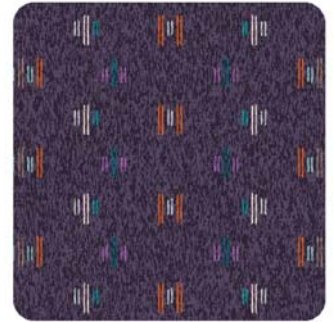
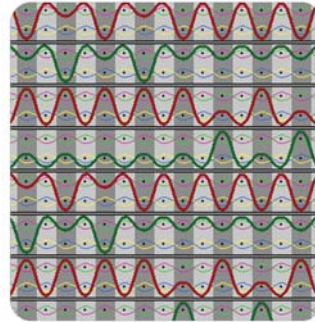
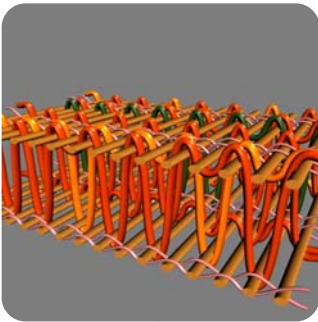
Yarns are created by the ScotWeave **Yarn Designer** program and are added to a yarn palette on screen which can hold up to 200 yarns for each design. Yarns can be changed, added to and removed from the palette at any time. Fast creation of pile and weft ground colour patterns has always been a priority for ScotWeave and with ergonomics in mind a number of quick and easy pattern input methods have been devised.

### Dobby Weaves

The **Cross sectional view** window allows you to create the pile travel through the ground/backing yarns - all ends in the pile stripe are viewed together. The **peg/chain plans** clearly show the three position lift sequences. Alter a top to bottom position and the cross section will automatically update. **Draw a motif**, an image of the finished pattern you wish to appear in the fabric, and have Velvet Dobby Designer automatically generate the cross section and weave notation for you. Variable pile denting now available. **Weave 3D** allows you to view the fabric structure as a real 3D image and to move around the structure in real-time.

### Jacquard Weaves

**Jacquard weaves** are created using ScotWeave **Velvet Base Weave Designer**. The weave notation, showing the 3-position lift, is displayed in one window while a second window displays a cross section showing the pile travel. ScotWeave can handle multiple-pile designs and all of these can be combined with cut-out areas of no pile. ScotWeave **Artwork Designer** is used to create the graphic image.



### Real-time View

Once the weave and colour patterns have been entered the resulting design will be viewed on screen. As you change the weave or colour patterns the resulting design is updated and viewed in real time. A blooming option is available which spreads the fibres of the tufts to simulate the effect of shrinks and other variations of fibre types. New fabric simulations have been added to realistically view the finished fabric.

### Output

You can print the finished design on any standard Windows printer. With higher resolutions available ScotWeave printout quality exceeds that of the screen simulations. For jacquard the weave may be output directly to electronic jacquard controllers or the weave lift information printed for manual card cutting. Both Dobby and Jacquard production data may also be printed to a customised loomcard.

### Special Features

- ★ **Draw a motif** and Velvet Dobby Designer generates the cross section and peg plans.
- ★ Changes to a design are viewed **immediately on screen** in real-time
- ★ **Cross-section window** and **Weave 3D** to trace path of pile travel through fabric
- ★ Analyses and **displays tension** of pile yarns
- ★ Option to put **pile on separate beams** - based upon tension data
- ★ **Supports cut-outs** (no pile in fabric), ground yarns are thus visible
- ★ Output to customised **production specifications** (loomcards) with full production details
- ★ **Variable pile denting** available for Velvet Dobby Designer
- ★ "Blooming" control for **accurate simulation** of yarn tufts
- ★ **Hole-checking** feature to locate and highlight "holes" in weave
- ★ Direct output to **electronic jacquards** (e.g. Staubli, Bonas)





ScotWeave **Terry Towel Designer** provides a complete CAD/CAM solution for jacquard woven terry towelling fabrics. From artwork creation, through towel layout and weave selection, to full colour printing and direct output to electronic jacquard controllers ScotWeave provides a comprehensive software solution which simplifies designs and improves productivity.

## Artwork Designer

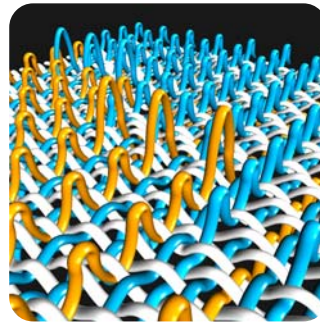
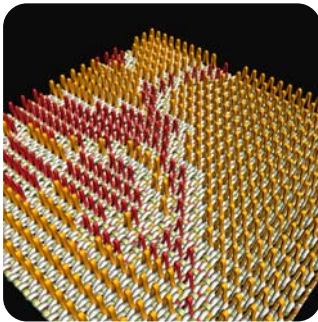
Artwork images are created and scaled for jacquard design using ScotWeave **Artwork Designer**. Images can be created freehand, scanned in and edited, or imported from virtually any other image creation software, including Photoshop. Independent X-Y scaling automatically compensates for different warp and weft fabric settings and allows the image to be edited in correct proportions. Work in repeat, work across the repeat joins; add edge locking and extra weft (cramming) colours.

## Yarns & Patterns

Yarns are created using ScotWeave **Yarn Designer** which allows you to create solid yarns, twist yarns, mixture yarns on screen and to scan in fancy yarns. Fast creation of warp/weft colour patterns has always been a priority for ScotWeave Jacquard Designer, and with ergonomics in mind a number of quick and easy pattern input methods have been devised.

## Base Weaves

ScotWeave **Terry Jacquard Base Weave Designer** is used to create component weaves (base weaves) for jacquard and uses ScotWeave's unique layered approach to aid in the design of complex structures. The screen shows the face weave, back weave, and resulting total weave in separate windows and each can be worked upon separately automatically updating the others. In addition to this separate warp and weft sequence layers can be viewed and worked upon individually (e.g. stitching layers).



## Templates

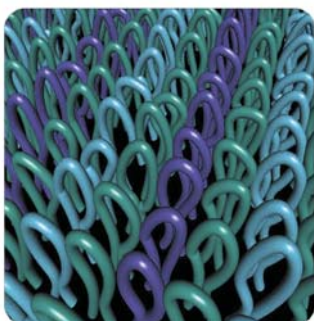
Classic **Towel templates** are available to choose from, and these may be adapted as required to speed up the initial design stage. Select different images for the loop/pile areas and header/border parts. This allows easy mix and matching header and loop areas, to create a greater range of towel designs for minimum amount of design work. Designs up to 32,000 ends by 32,000 picks can be created.

## Loom Control

Accurate control of **electronic loom functions** is essential for terry towel fabrics. ScotWeave allows direct input of pile height, weft density, weaving speed, beam tensions and cramming for each towel section and all of this at the design stage when all parts of the design are visible on screen for reference. The type of terry fabric (e.g. **3-pick terry** or **7-pick terry**) can also be selected and this information used to automatically calculate default pile height and weft density values for each pick in the cloth.

## Special Features

- ★ Special **Terry Base Weave Designer** program with notation for pile and ground ends
- ★ Standard **towel templates** provided for fast creation of towel structures
- ★ Apply **loom control** information (e.g. pile height, density) to each towel section independently.
- ★ Full support for **3-pick terry** and **7-pick terry** designs
- ★ Change the **pile-to-ground sequence** of warp ends quickly and easily
- ★ Realistic **loop-pile fabric simulation** on screen and to printer
- ★ Direct output to **electronic jacquard looms** and/or card cutters
- ★ Automated creation of **terry jacquard hook maps** and harnesses



How to contact ScotCad Textiles Ltd



Tel: +44 (0)1896 850473



Email: [info@ScotWeave.com](mailto:info@ScotWeave.com)



Web: [www.ScotWeave.com](http://www.ScotWeave.com)